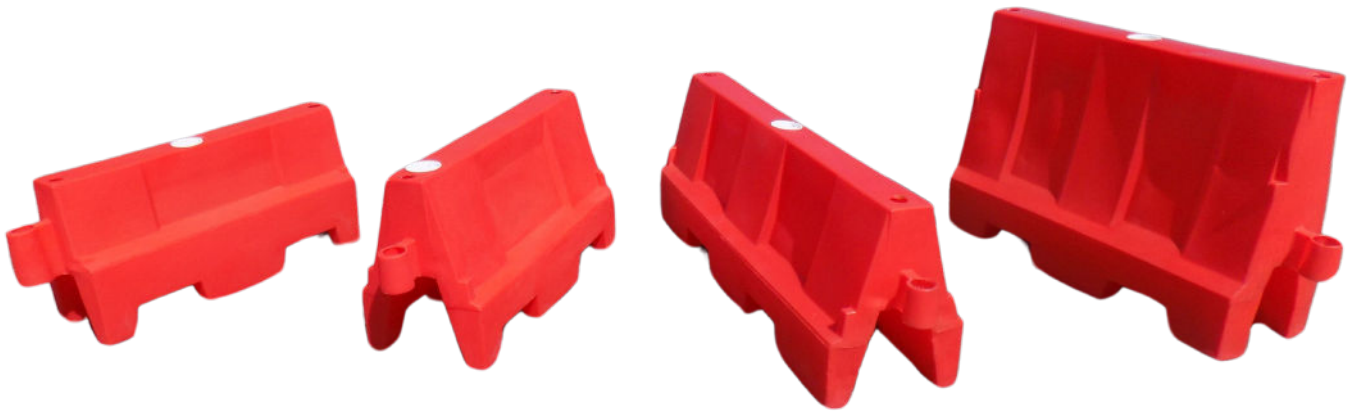


EVO Barriers



Product Info:

The EVO Barrier range consists of three sizes Evo 1 metre, Evo 1.5 metre and Evo 80, all fully interlocking and versatile. Each style can be customised in a range of colours.

For stability and strength, extra weight can be added to the barriers by filling with water or sand.

Once easily assembled, the Evo will create a solid wall, leaving no gaps when linked together.

Manufactured from prime UV stabilised polyethylene for a lasting and durable life.

The Evo range is fully stackable for stress free storage and transportation.

Key Features:

- UV Stabilised MDPE
- Stackable for Easy Transportation
- One Person Assembly & Deployment
- Customisable & Versatile
- Accessories Available:
 - Mini Mesh Panel
 - Mini Mesh Reflective Panel
 - Post & Plank Reflective Panel
 - 'Evo Angle' to create both left & right corners

Specifications:

Product	EVO 1M	EVO 1.5M	EVO 80	EVOGATOR
Length	1000mm	1500mm	1200mm	1000mm
Width	400mm	400mm	400mm	300mm
Height	555mm	555mm	800mm	500mm
Weight (E / F)	6.3 / 26.3 kg	10 / 30 kg	9 / 29 kg	4.6 / 16 kg
Colour	Red / White	Red / White	Red / White	Red / White

