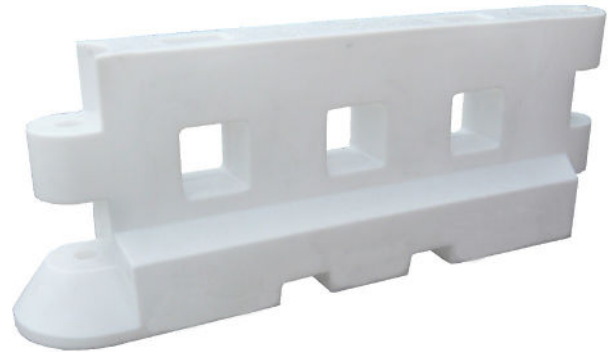
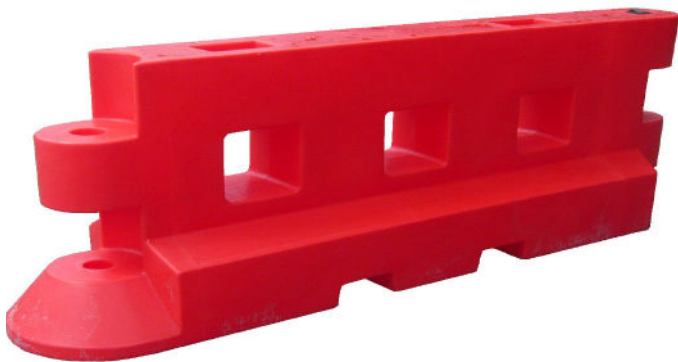


## GB2 Barriers



### Product Info:

The GB2™ barrier has a 2-metre working length making it an ideal low level containment barrier, suitable for highway and site delineation.

Transportation and storage are never a problem, as the GB2™ is fully stackable for convenience and safety.

The system is fully interlocking and can be easily deployed by 2 people without the need for lifting equipment.

The GB2™ has the ability to achieve up to 35° angles thanks to its pin locking device, making uneven ground and corners hassle free.

### Key Features:

- UV Stabilised HDPE
- Heavy Duty Solution
- Up to 35° Angles Through Its Pin Locking System
- Easy Deployment by 2 People
- Fully Stackable for Ease of Transportation
- Accessories Available:
  - Mesh and/or Hoarding Panels
  - Pedestrian & Vehicle Gate Systems
  - Infill Panels

### Specifications:

Product	GB2
Length	2000mm
Width	500mm
Height	900mm
Weight (E / F)	32 / 350 kg
Colour	Red / White

