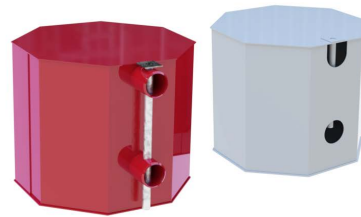
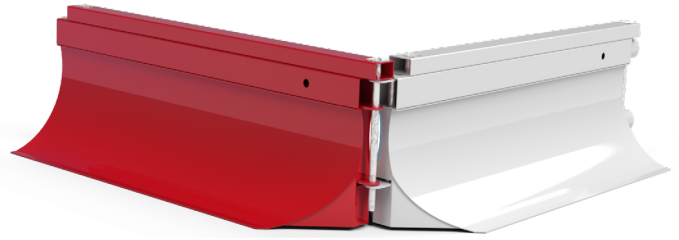
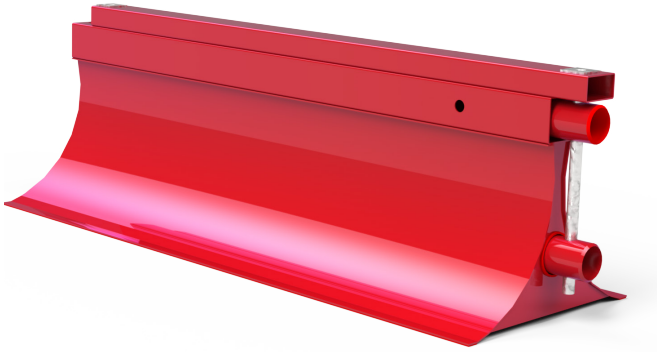


Fortis Crash Barrier



Product Info:

The Fortis Crash Barrier is a heavy duty steel barrier system designed for use on the highway where live traffic is in close proximity to site operatives.

The Fortis Crash System has been **crash tested to T2 W6** standards to 50mph.

It's sturdy construction has been wind tested to Category A by MIRA and a range of accessories are available to secure site or perimeter access.

Fortis Crash is easy to transport and can be deployed by a two person team, without the need for heavy lifting machinery.

Key Features:

- Powder Coated Steel Construction
- Stackable for Easy Transportation
- Extremely Strong & Durable
- Both Wind and Crash Tested Independently
- Accessories Available:

Low Level Mini Mesh Panels

Full Height Mesh Panels

Male & Female End Sections

Pedestrian & Vehicle Gate Systems



Specifications:

Product	Fortis Crash Barrier
Length	1500mm
Width	510mm
Height	496mm
Weight	68 kg
Colour	Red / White

