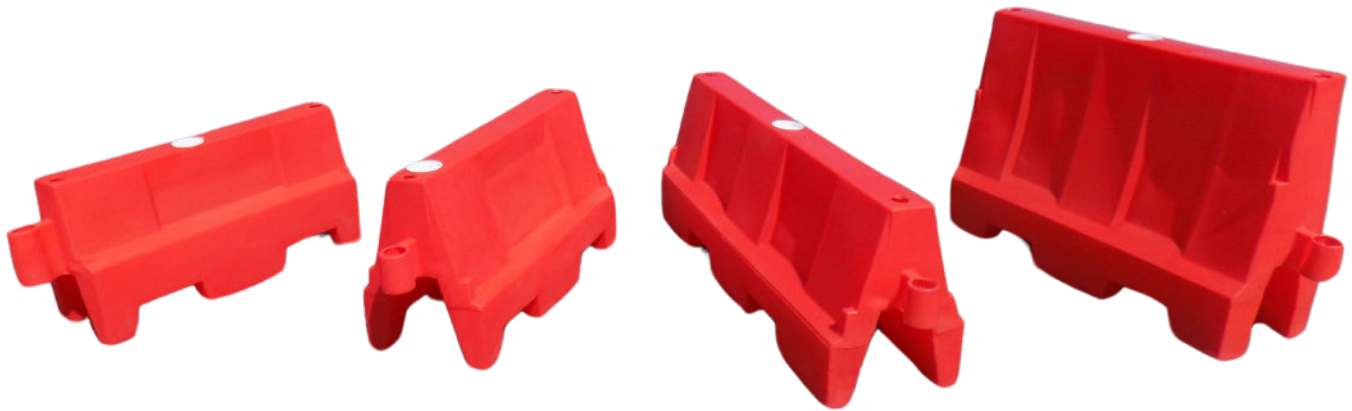


EVO Barriers



Product Info:

The EVO Barrier range consists of three sizes Evo 1 metre, Evo 1.5 metre and Evo 80, all fully interlocking and versatile. Each style can be customised in a range of colours.

For stability and strength, extra weight can be added to the barriers by filling with water or sand.

Once easily assembled, the Evo will create a solid wall, leaving no gaps when linked together.

Manufactured from prime UV stabilised polyethylene for a lasting and durable life.

The Evo range is fully stackable for stress free storage and transportation.

Key Features:

- UV Stabilised MDPE
- Stackable for Easy Transportation
- One Person Assembly & Deployment
- Customisable & Versatile
- Accessories Available:
 - Mini Mesh Panel
 - Mini Mesh Reflective Panel
 - Post & Plank Reflective Panel
 - 'Evo Angle' to create both left & right corners

Specifications:

| Product | EVO 1M | EVO 1.5M | EVO 80 | EVOGATOR |
|----------------|---------------|-------------|-------------|-------------|
| Length | 1000mm | 1500mm | 1200mm | 1000mm |
| Width | 400mm | 400mm | 400mm | 300mm |
| Height | 555mm | 555mm | 800mm | 500mm |
| Weight (E / F) | 6.3 / 26.3 kg | 10 / 30 kg | 9 / 29 kg | 4.6 / 16 kg |
| Colour | Red / White | Red / White | Red / White | Red / White |

